



# Exchanging SDEF Data with RMS and QCS

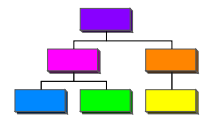
Tips you will need to know about:

1. The dates on the SDEF schedule are compared to the actual start/finish dates on the Daily QC Report.
2. All modules updated by the SDEF schedule must be assigned to the QCS Site importing the SDEF schedule.
3. QCS now compares the current imported schedule update to the previous approved schedule.

# Schedules and the SDEF

An active role in change management is mandatory to mitigate costs of the Government and the Contractor. Organized procedures, such as schedules, form the backbone of a strong and effective Quality Control and Quality Assurance organization.

The Critical Path Method (CPM) is a planning and scheduling method that utilizes a network diagram (graphical plot) to show all job operations in a sequential fashion necessary for orderly completion.



A critical item for the Contractor, when preparing an updated schedule is ensuring that the Scheduler has used the correct Actual Start and Finish dates of activities as reported on the jobsite. A new report has been added in RMS and QCS that identifies all activities that have had an Actual Start or Actual Finish since the last schedule update was imported into QCS. This report will greatly assist the Scheduler in preparing the next update.

When QCS is asked to import a schedule update it will check the SDEF file to ensure that the Scheduler has used the Actual Start and Actual Finish dates as were entered in the Daily QC Reports. If the dates do not match, QCS does not allow the updated schedule to be imported. In order to assist the Contractor in managing these dates, QCS provides a second report that specifically addresses all differences between the dates from the Daily QC Report and the dates from the SDEF File. This report is an error report labeled: “Invalid Actual Starts/Finish Dates on Schedule”

In the event the Contractor determines that the Actual Dates in the Daily QC Report are incorrect, the Government can mark the Daily QC Report – “Return to Contractor for corrections” and export it back to the Contractor. The Contractor is then able to access the report, correct the dates, and send the report back to the Government.

## The SDEF file will not import a Schedule update into QCS unless:

### Error on Schedule - Schedule can not be imported



Actual Start/Finish dates on schedule do not match actual Start/Finish dates reported on the Daily QC Reports.

The schedule can not be imported until actual dates on the schedule match the actual Start/Finish dates reported on the daily QC Reports.

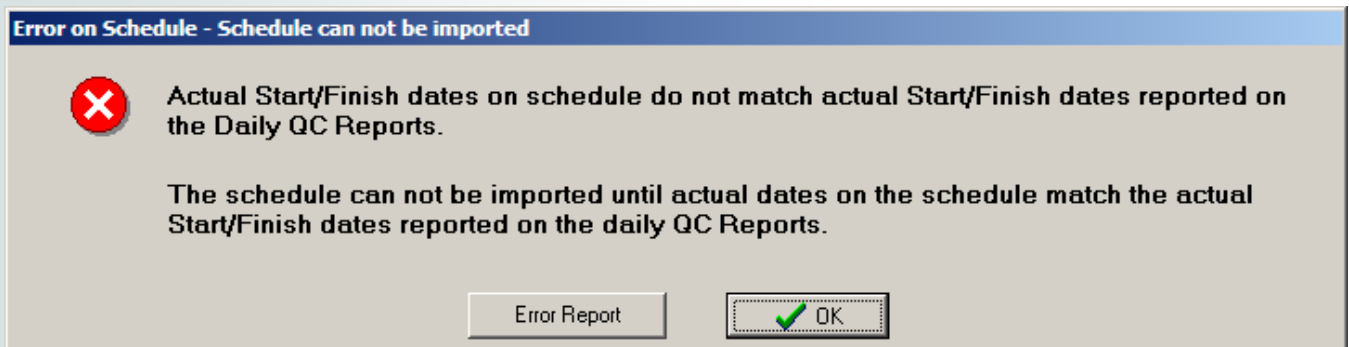
Error Report

OK

1. The Actual Start/Finish dates in the SDEF file MUST match the dates entered in Daily QC Reports.
2. If QCS will not import the updated schedule due to the dates not matching, it will still import all the other data from the SDEF file, including a Pay Request.

## The Start/Finish dates in QCS must match the dates in the SDEF Schedule

When there is a discrepancy between dates, QCS can generate an error report that tabulates which dates must be changed. When this message appears, you should press the “Error Report” button to view the report. A sample error report is shown on the next page.



The result is TWO Daily Reports that must be corrected. The report that the Activity was first reported Started/Finished, and the report that IT SHOULD have been reported Started/Finished will have to be returned to the Contractor for correction.

# QCS generated Error Report



US Army Corps  
of Engineers

## Invalid Actual Starts/Finish Dates on Schedule.

04 Nov 2009

MV/Construct Large Admin Building VBC  
W912ER-04-D-0008 0014

VV-Victory Resident Office

Activity No.	Activity Description	Actual Start Date		Actual Finish Date		Required Action
		Actual Start on QC Report	Actual Start on Schedule	Actual Finish on QC Report	Actual Finish on Schedule	
5200	Design Duration - CLIN 0005	08/15/2008	08/15/2008	04/10/2009		Use dates from QC Report
11100	Review & Approve QCS/RMS Imple	11/03/2008	11/03/2008	12/03/2008		Use dates from QC Report
12040	USACE Review Proposal / Issue	10/24/2008	10/24/2008	12/10/2008		Use dates from QC Report
20000	Provide Security During Constr	12/14/2008	11/19/2008			Use dates from QC Report
30030	Butler Fabs Primary PEB Struct	11/04/2008	11/04/2008	12/18/2008		Use dates from QC Report
30220	Wall Panels are Fabricated	11/04/2008	11/04/2008	12/27/2008		Use dates from QC Report
31010	Start of CLIN 0003 Constructio	12/14/2008	11/19/2008	12/13/2008	11/20/2008	Use dates from QC Report
31020	Site Prep for Foundations	12/14/2008	11/19/2008	02/27/2009		Use dates from QC Report
31630	Butler Fabs Secondary PEB Stru	11/04/2008	11/04/2008	12/18/2008		Use dates from QC Report
31720	Roof Panels are Fabricated	11/04/2008	11/04/2008	12/27/2008		Use dates from QC Report
32005	General Conditions	12/14/2008	11/19/2008			Use dates from QC Report
32075	Erect Stairs	05/09/2009	05/09/2009		06/15/2009	Use dates from QC Report
32080	Pour 1st Floor Concrete Slab o	03/28/2009	03/28/2009		06/14/2009	Use dates from QC Report
32160	Exterior CMU Wall / Door Frame	04/10/2009	04/10/2009		05/31/2009	Use dates from QC Report
32170	Exterior CMU Wall / Door Frame	03/31/2009	03/31/2009		06/16/2009	Use dates from QC Report
32200	Erect Exterior Wall Panels	05/22/2009	05/22/2009		06/22/2009	Use dates from QC Report
32220	Exterior Stucco Finish	05/16/2009	06/01/2009			Use dates from QC Report
32315	Building Envelope Sealing Syst		06/06/2009			Use dates from QC Report
32380	Rough-in Fire Detection & Alar		05/25/2009			Use dates from QC Report
32410	Rough-in Intrusion Detection S		04/01/2009			Use dates from QC Report
32430						
33010						
33170						
33220						
33310						
33380						
33430						
33435						
34140	Exterior CMU Wall/Door Frames-N		04/18/2009			Use dates from QC Report
34220	Exterior Stucco Finish (Scaffo		06/19/2009			Use dates from QC Report
34430	Rough-in Communications System		06/05/2009			Use dates from QC Report
40030	Clear Port - Transformer	05/21/2009	05/21/2009		06/03/2009	Use dates from QC Report
40040	Ground Transport - Transformer		06/04/2009		06/12/2009	Use dates from QC Report
40050	Transformer Received @ Site		06/12/2009		06/12/2009	Use dates from QC Report
40060	Shake Out Materials for Transf		06/13/2009			Use dates from QC Report
40100	Procure & Deliver Water Stora	02/04/2009	02/04/2009		06/09/2009	Use dates from QC Report
40110	Water Storage Tanks - Shipped		06/10/2009		06/16/2009	Use dates from QC Report
40120	Water Storage Tanks - Transloa		06/17/2009			Use dates from QC Report
56000	Prepare FDN/Structure CFC Desi	09/13/2008	09/13/2008	10/17/2008	10/02/2008	Use dates from QC Report
56060	FDN/Structure CFC Design (65/9	10/15/2008	10/22/2008	10/14/2008	10/23/2008	Use dates from QC Report
56100	Prepare 100% Geotechnical Repo	10/22/2008	10/22/2008	01/16/2009	12/02/2008	Use dates from QC Report
65390	Rough-in Access Control System		04/09/2009			Use dates from QC Report
65395	Rough-in Intrusion Detection S		04/09/2009			Use dates from QC Report
65430	Gypsum Board		06/01/2009			Use dates from QC Report
67000	Rough-in Communications System		04/25/2009			Use dates from QC Report
71074	Clear Port - Fuel Tank	05/21/2009	05/21/2009		06/03/2009	Use dates from QC Report
71076	Ground Transport - Fuel Tank		06/04/2009		06/11/2009	Use dates from QC Report
71078	Fuel Tank Received @ Site		06/12/2009		06/12/2009	Use dates from QC Report
71080	Shake Out Materials for Fuel T		06/13/2009			Use dates from QC Report
103000	Rough-in CCTV System - Buildi		06/11/2009			Use dates from QC Report

**The Government, in RMS, can return any QCS Report back to the Contractor for correction, even if the report has been marked as Completed.**

# QCS Report: Activities Started/ Finished Since Previous Schedule



US Army Corps  
of Engineers

## Activities Started/Finished since Previous Schedule

05 Nov 2009

TEST PROJECT  
DACA83-00-C-0033 NA

Construction Services Section

Activity No.	Activity Description	Actual Start reported on QC Report	Actual Finish reported on QC Report	Activity Status
10000	Award Contract / NTP for Desig	08/14/2008	08/14/2008	Activity Finished
10010	Notice to Proceed for Construc	10/28/2008	10/28/2008	Activity Finished
10020	Period of Performance (330 Cal	10/29/2008		Activity in Progress
10030	Pre-Construction Conference	09/03/2008	09/03/2008	Activity Finished
10040	Kick off Meeting/Design Concep	09/03/2008	09/03/2008	Activity Finished
10060	Project Activation/Mobilizatio	08/15/2008	11/30/2008	Activity Finished

**This report should be provided to the Scheduler prior to updating the schedule for the contract. The Actual Start/Finish dates must match in order for QCS to import the SDEF schedule.**

# The following modules need to be assigned to the QCS site that will import the SDEF file

The following Modules are updated from your Network Analysis System (SDEF).  
When importing the SDEF file, all of the following modules must be assigned to the site importing the file.

Pay Activities:	[GQNFRC46] Manuals	...
Activity Schedule:	[GQNFRC46] Manuals	...
Progress Payments:	[GQNFRC46] Manuals	...
Prime Contractor / Subcontractors:	[GQNFRC46] Manuals	...
Features of Work:	[GQNFRC46] Manuals	...

**If the above modules are assigned to other Remote QCS Sites they must be reassigned to the QCS site that will import the SDEF file.**

**All other modules (e.g., Request for Information, Contractor Insurance, etc.) may be assigned to any Remote QCS Site because the data elements in the other modules are not a part of the SDEF file.**

# QCS now compares the current imported schedule update to the previous approved schedule



US Army Corps  
of Engineers

## Compare Proposed Update to Previous Schedule

TEST PROJECT  
DACA83-00-C-0033 NA

04 Nov 2009

Construction Services Section

<b>Data Dates</b>		
Current Schedule calculated on 12/03/2008		Previous Schedule calculated on 12/03/2008
<b>Construction Start</b>		
	Current	Previous
Schedule Start Date	08/01/2008	08/01/2008
Notice to Proceed	08/11/2001	08/11/2001
First Activity Start	12/06/2008 ES	12/06/2008 ES
First Activity 10100	Transfer Employees Out of Exis	
Need First Activity Date to perform calculation.		
<b>Construction Finish</b>		
	Current	Previous
Schedule End Date	10/07/2009	10/07/2009
Required Completion	05/16/2003	05/16/2003
Last Activity Finish	09/23/2009 LF	01/23/2009 LF
Last Activity 10020	Period of Performance (330 Cal	
Contractor is scheduled to finish 2322 days late.		
<b>Activity Progress</b>		
	Current	Previous
Activities Not Started	4	9
Activities In Progress	2	1
Activities Finished	4	0
Total all Activities	10	10
<b>Number of Activites scheduled to Start/Finish in next 30 days</b>		
Scheduled Early Start		0
Scheduled Late Start		0
Scheduled Early Finish		1
Scheduled Late Finish		1
40% of Activities Finished		
<b>Critical Activities</b>		
	Current	Previous
Critical Activities	4	8
Negative Float Activities	0	0
Number of Relationships	6	26
Lowest Total Float	0 days	0 days
<b>Contractors with the most remaining Critical Activities</b>		
Contractor A		2
OWN		2
100% of Activities Not Started are Critical		
<b>Activity Changes</b>		
	Activities Changed	
A1. Activities added	0	
A2. Activities deleted	0	
A3. Description changed	0	
A4. CLIN changed	2	
A5. Unit Cost changed	0	
A6. Units changed	0	
A7. Quantity changed	0	
A8. Amount changed	2	
A9. Contractor changed	0	
A10. Feature changed	0	
A11. Area changed	0	
A12. Category changed	0	
A13. Phase changed	0	
A14. Duration changed	0	
A15. Workers changed	0	
<b>Schedule Changes</b>		
	Activities Changed	
B1. Actual Starts	2	
B2. Actual Finishes	4	
B3. Should have started	0	
B4. Should have finished	0	
B5. Changed to Critical	0	
B6. Changed to not Critical	0	
B7. Early Start Date	0	
B8. Late Start Date	0	
B9. Early Finish Date	1	
B10. Late Finish Date	1	
B11. Total Float	0	
B12. Remaining Duration	0	
B13. Lag changed	0	
B14 A. Relationships added	0	
B14 B. Relationships deleted	20	