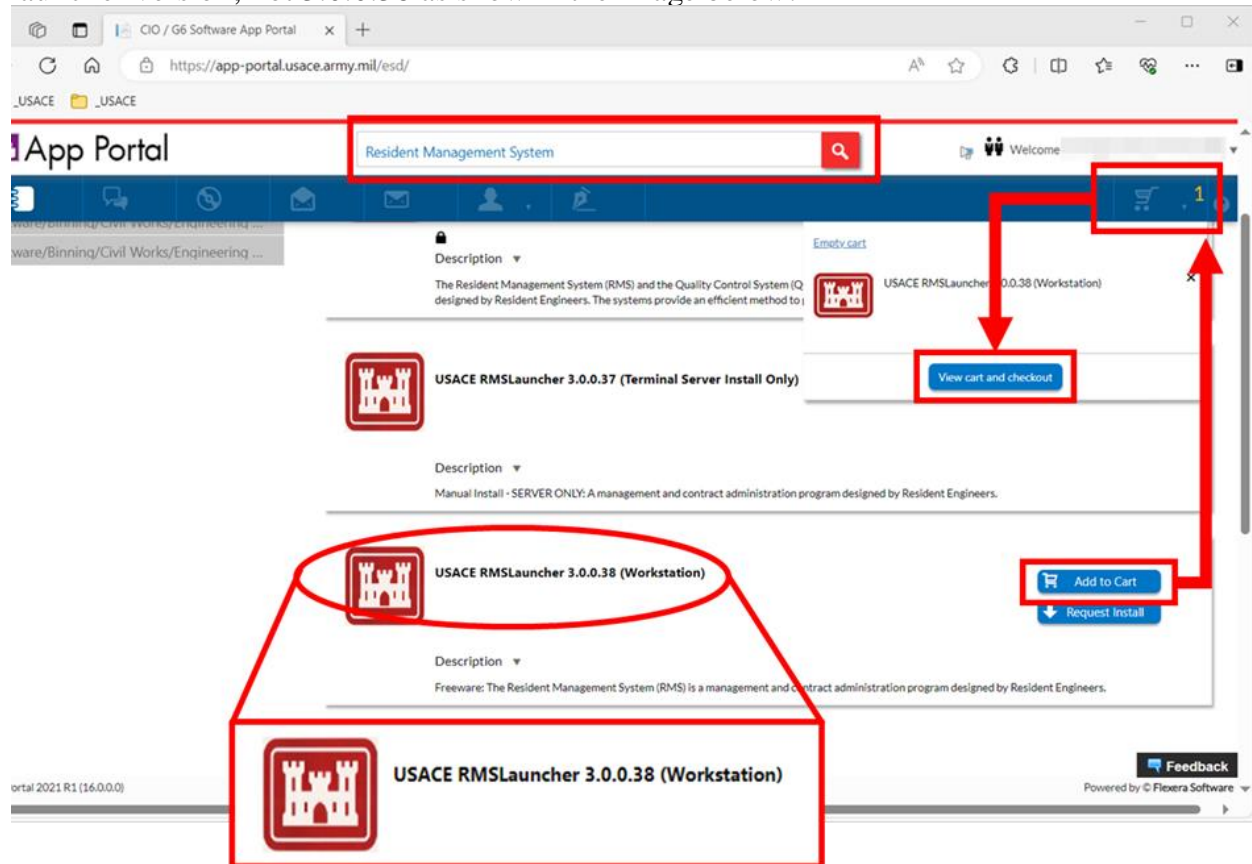


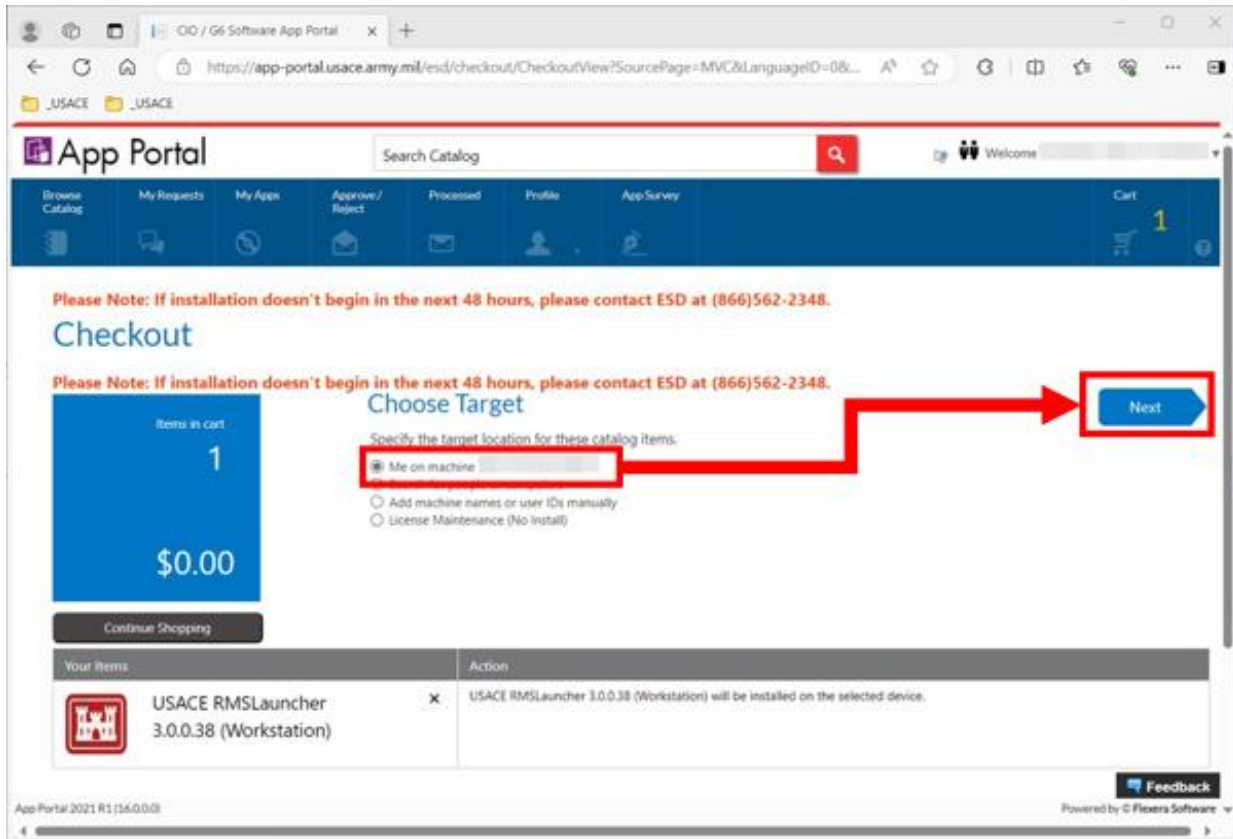
Gov Users Installing RMS for the First Time on a GFE

- Go to: [CIO / G6 Software App Portal \(army.mil\)](https://app-portal.usace.army.mil/).
- Perform a search for “Resident Management System”.
- Choose the RMS Launcher result that reflects the most recent (highest) launcher version number.

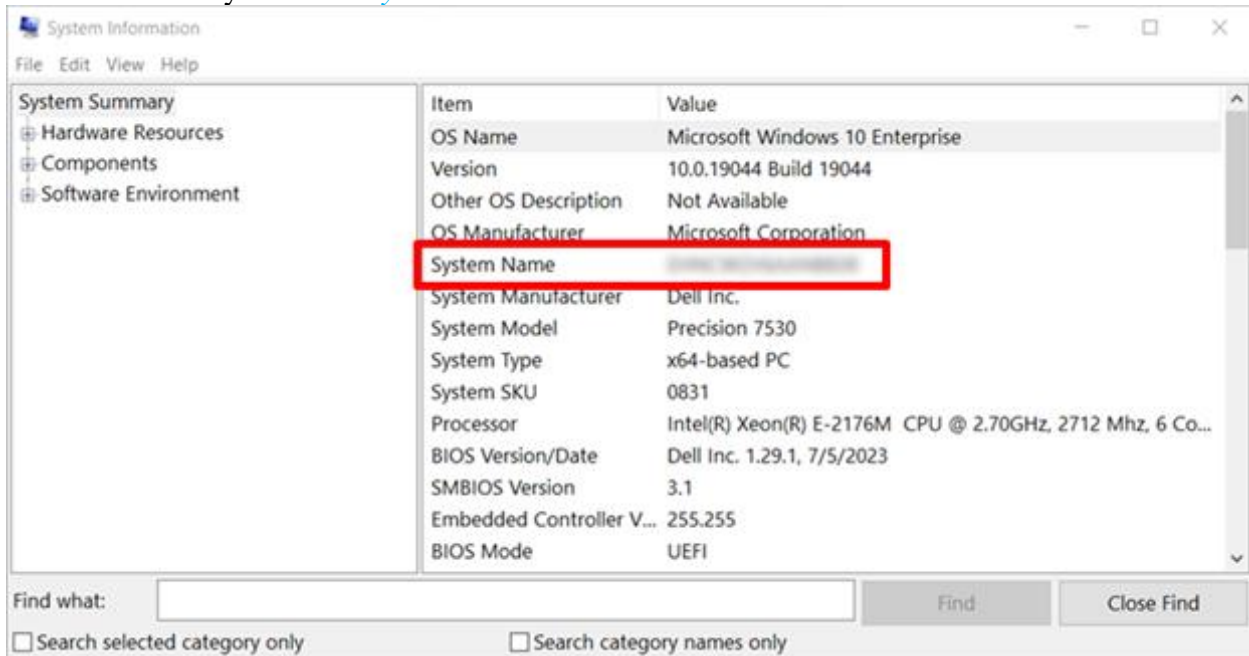
Note: The most recent launcher version number is now 3.0.0.39. Make sure to choose the latest launcher version, not 3.0.0.38 as show in the image below.



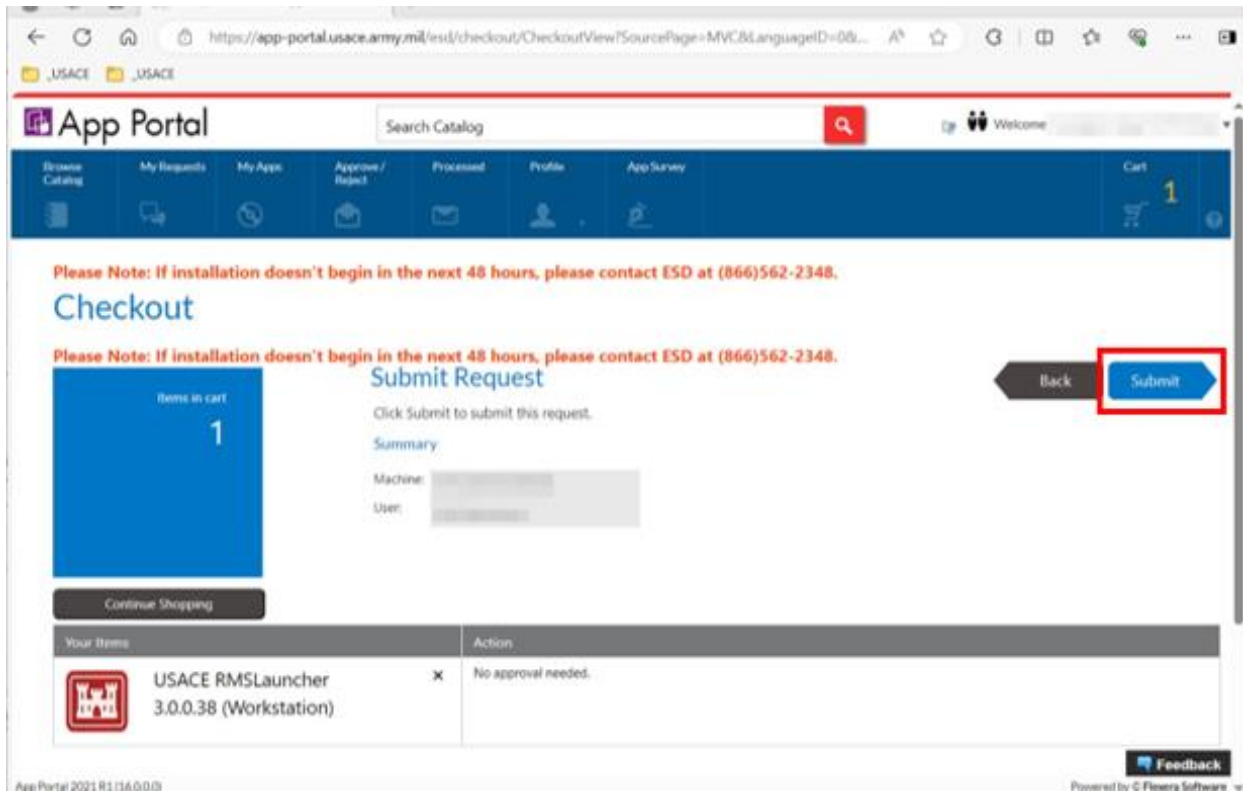
- Click *Add to Cart*.
- Click on *Cart*, then *View cart and checkout*.
- Choose the *Me on Machine* `***_*****_*****` target under the Choose Target section.



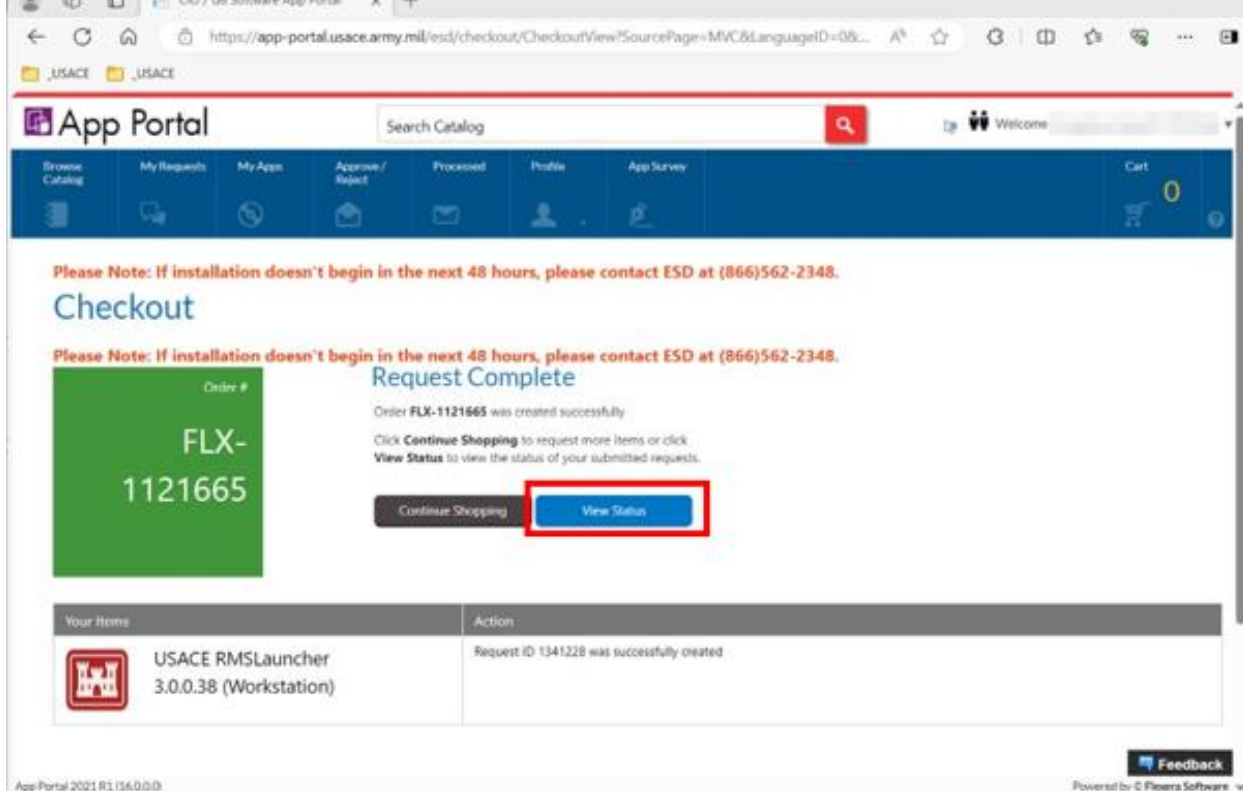
- To check the machine name, go to the *System Information* application on the machine and verify with the *System Name*.



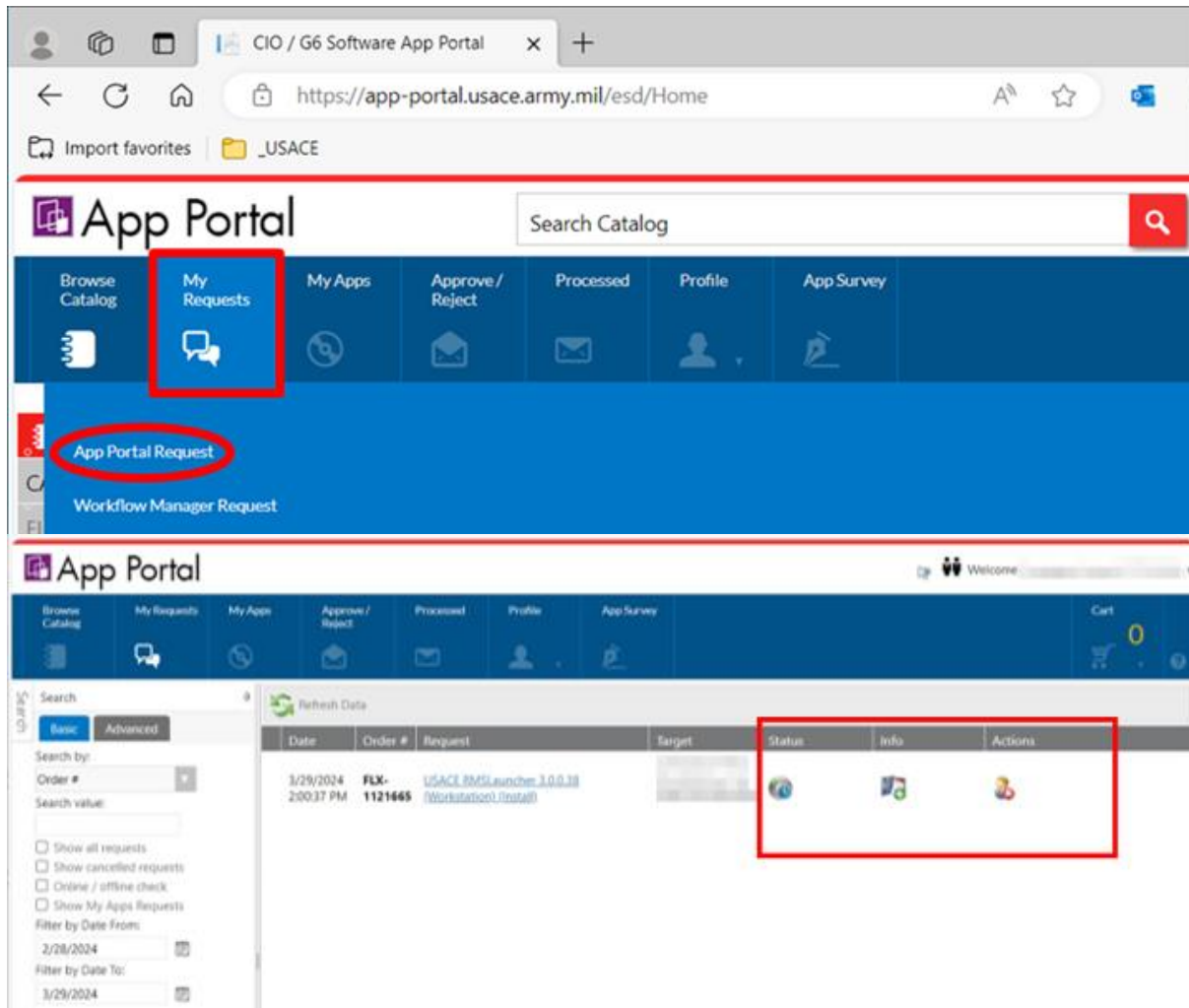
- Click *Next*.
- Click *Submit* to submit the request.
 - Approval is not required for installation.



Once the request has been completed, click on [View Status](#) to check the status of the installation.



If you had previously closed the app portal and wish to check the status, log in to the app portal. Then click on the **My Requests, App Portal Requests** to see the list of requested apps. The status icons on the right will display the updated information for each app in the list.



Note: This installation may take up to 24 hours to install. The computer that is to receive this installation needs to remain connected to the VPN or directly attached to the Government network until confirmation is received that the installation has been completed.